

BREATHE INHALABLE MEALTIME INSULIN



Mealtime on your time.

*AFREZZA® is the only ultra rapid-acting
inhaled mealtime insulin.*

Prescription Required

 **afrezza**[®]
(insulin human) Inhalation Powder

Please see accompanying Medication Guide and Instructions For Use in the pocket of this brochure, and see Important Safety Information including **IMPORTANT WARNINGS** on pages 10-11 of this brochure.

RECOGNIZED IN 2025 AMERICAN DIABETES ASSOCIATION STANDARDS OF CARE IN DIABETES

Inhaled Technosphere insulin can be useful for people with diabetes, providing an alternative method of insulin delivery with very fast onset of action.

INDICATION

AFREZZA® is a rapid acting inhaled human insulin indicated to improve glycemic control in adult patients with diabetes mellitus.

SUMMARY OF IMPORTANT SAFETY INFORMATION

- **Afrezza® (insulin human) Inhalation Powder may cause serious side effects**, including sudden lung problems (in a study, some AFREZZA-treated patients with asthma, whose asthma medication was temporarily withheld, experienced sudden lung problems).
- **Other serious side effects may include** low blood sugar, decreased lung function, lung cancer, diabetic ketoacidosis, severe allergic reaction, low potassium in your blood, and heart failure. Some of these side effects may lead to death.
- The most common side effects are low blood sugar, cough, and sore throat.
- **Don't use AFREZZA if you have long-term lung problems such as asthma or chronic obstructive pulmonary disease (COPD)** or are allergic to any of the ingredients in AFREZZA.
- **Don't use AFREZZA if you are having an episode of low blood sugar.**
- Before starting AFREZZA, your healthcare provider will give you a breathing test to check how your lungs are working.
- AFREZZA is not for use to treat diabetic ketoacidosis.
- AFREZZA must be used with basal insulin in people who have type 1 diabetes.
- AFREZZA is not for use in people who smoke or have recently stopped smoking (less than 6 months).
- **Talk to your healthcare provider about all your medical conditions and medications.**

Please see Important Safety Information on page 10, and see Medication Guide, including **IMPORTANT WARNINGS**, and Instructions for Use in pocket. Visit www.afrezza.com/safety to see Full Prescribing Information.

PROVEN MEALTIME CONTROL

One of the benefits of inhaled insulin is its fast action time.

AFREZZA stops lowering your blood glucose after ~1.5 - 3 hours for the 4 unit and 12 unit cartridges, respectively, which may reduce the risk of insulin stacking (taking multiple doses of rapid-acting insulin in quick succession, which may lead to hypoglycemia).



ULTRA RAPID ABSORPTION

When AFREZZA insulin is inhaled, it enters through the large surface area of the lungs, which allows for ultra rapid absorption.



MIMICS NATURAL INSULIN RESPONSE

AFREZZA uses a unique formulation to deliver insulin into the bloodstream via the lungs in less than 1 minute.

- Blood sugar starts to lower in about 12 minutes*
- Time to peak effect is approximately 35-45 minutes*



CONVENIENT AND DISCREET

Portable oral inhaler used to inhale insulin.

*For the 4- and 12- unit cartridges, respectively.



“

AFREZZA is a critical part of my type 1 diabetes management! I especially appreciate how fast it affects my blood sugar, and how much flexibility it's given me as someone who exercises multiple times a day.



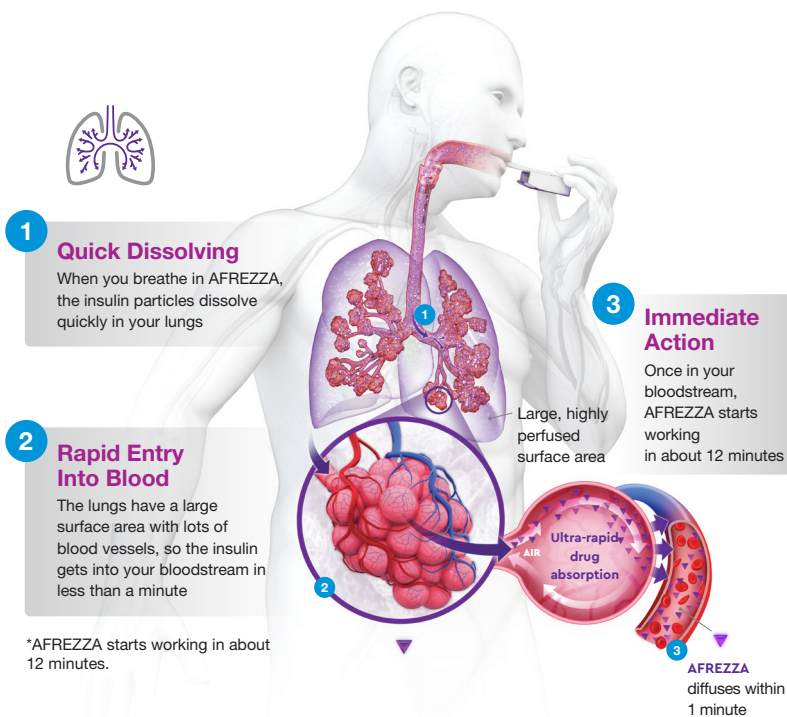
- Ginger Viera, Author
T1D & Author of Exercise with Type 1 Diabetes

”

These statements reflect the honest experiences of the user. Results may vary.

Mealtime Insulin Absorption Through The Lungs

AFREZZA is an insulin that you inhale. It works fast* because it gets absorbed through your lungs. Here's how it happens:



Life doesn't always follow a schedule. Ask your doctor about AFREZZA for mealtime insulin.

Important Safety Information

Decreased lung function: Your healthcare provider should check how your lungs are working before you start using AFREZZA, 6 months after you start using it, and yearly after that.

DOSE AT THE START OF A MEAL – NO PRE-BOLUSING REQUIRED.

Because AFREZZA® starts working fast*, **you can take it right when you start eating.** This means no waiting, so you can be more flexible with meals and snacks whether you're at home, out to eat, or traveling.



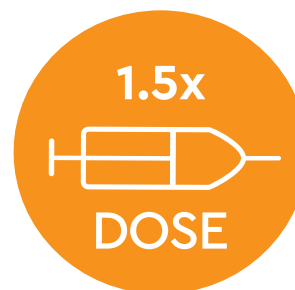
**4 AFREZZA
UNITS**



**8 AFREZZA
UNITS**



**12 AFREZZA
UNITS**



DOSING WITH AFREZZA

Dosing with AFREZZA is a little different than what you may be used to with injectable insulins. Clinical Studies suggest that the titrated dose may be 1.5x the initial dose of AFREZZA to achieve a comparable glucose lowering effect to injected insulin. You may need to adjust your dose, up or down, based on your blood sugar levels and how AFREZZA works for you. AFREZZA is available in 4, 8 and 12-unit color-coded cartridges, so if needed, you can combine them to take your prescribed dose.

*Starts lowering blood sugars in ~12 minutes.

Please see accompanying Medication Guide and Instructions For Use in the pocket of this brochure, and see Important Safety Information including **IMPORTANT WARNINGS** on pages 10-11 of this brochure.

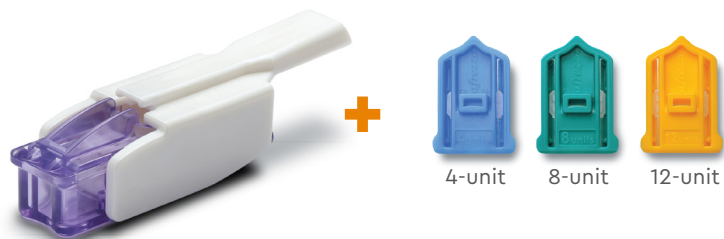


Mimicking physiologic insulin may limit insulin-associated weight gain



Learn more about managing mealtime in the moment with AFREZZA®

Using insulin that more closely mimics physiological secretion could help mitigate the weight gain commonly associated with diabetes treatment



AFREZZA® is available in 4, 8, and 12-unit cartridges

Please see accompanying Medication Guide and Instructions For Use in the pocket of this brochure, and see Important Safety Information including **IMPORTANT WARNINGS** on pages 10-11 of this brochure.

NO NEED FOR MEALTIME INJECTIONS

Scar tissue can develop under the skin as a result of repeated injections, and can be a concern for people with diabetes. Scar tissue can affect the body's ability to absorb insulin and can cause serious complications.



Because AFREZZA® is taken without the need for mealtime injections, you can potentially avoid over 1,000 insulin injections per year.*

*Based on an estimation of approximately 3 meals per day, for a total of 1,095 possible mealtime injections per year.



While I use an injected long-acting insulin for my basal needs, having an inhaled insulin therapy option has allowed me to prevent painful infusion sites or unpredictable insulin absorption levels from injectable insulin. With the initiation of AFREZZA, I have experienced a marked improvement in the health of my skin.



- Danica, Health Coach

T1D Afrezza user for over 3 years

These statements reflect the honest experiences of the user. Results may vary.



Important Safety Information

Your dose of AFREZZA may need to change because of change in level of physical activity or exercise, weight gain or loss, increased stress, illness, change in diet, or because of other medicines you take.



Accelerating Access to AFREZZA®

AfrezzaAssist®

COMMERCIAL INSURANCE **\$35** Pay as little as per month*

Eligible patients can enroll at AFREZZAsavingscard.com

MEDICARE PART D **\$35** Pay as little as per month†

Assistance is available for eligible patients

- AfrezzaAssist® will determine cost and coverage for your patients and coordinate fulfillment within the AFREZZA Specialty Pharmacy Network or through a local pharmacy (if requested)
- Prescription must be submitted to AfrezzaAssist® to access cash pay option

Cash Option:

Prescription must be submitted to AfrezzaAssist to access cash pay option. Patients pay as little as \$99 per box, 3 box maximum

*Subject to eligibility criteria and maximum benefit limitations. Additional cost savings (reduced copay) may be possible when combined with insurance coverage. See AFREZZAsavingscard.com for complete program terms and conditions.

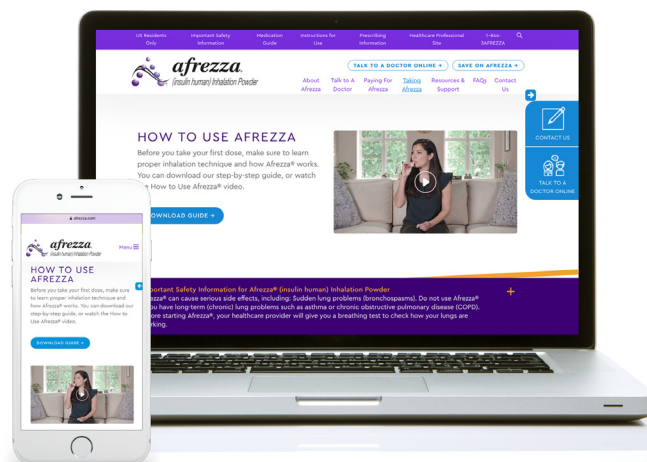
†See medicare.gov/coverage/insulin for complete program terms and conditions.

If you're ready to try a different kind of insulin, ask your health care provider if AFREZZA® is right for you.



CONNECT TO LEARN MORE

If you're ready to learn more about AFREZZA, visit www.afrezza.com for a deeper dive into how inhaled insulin works and detailed instructional guides.



 **PHONE (TOLL FREE) 844-4MANKND (844-462-6563)**

IMPORTANT SAFETY INFORMATION

What is the most important information I should know about AFREZZA?

AFREZZA can cause serious side effects, including:

- **Sudden lung problems (bronchospasms).** In a study, some AFREZZA-treated patients with asthma, whose asthma medication was temporarily withheld, experienced sudden lung problems. **Do not use AFREZZA if you have long-term (chronic) lung problems such as asthma or chronic obstructive pulmonary disease (COPD).** Before starting AFREZZA, your healthcare provider will give you a breathing test to check how your lungs are working.

What is AFREZZA?

- AFREZZA is a man-made insulin that is breathed-in through your lungs (inhaled) and is used to control high blood sugar in adults with diabetes mellitus.
- AFREZZA is not for use to treat diabetic ketoacidosis. AFREZZA must be used with basal insulin in people who have type 1 diabetes mellitus.
- It is not known if AFREZZA is safe and effective for use in people who smoke. AFREZZA is not for use in people who smoke or have recently stopped smoking (less than 6 months).
- It is not known if AFREZZA is safe and effective in children under 18 years of age.

Who should not use AFREZZA?

Do not use AFREZZA if you:

- Have chronic lung problems such as asthma or COPD.
- Are allergic to regular human insulin or any of the ingredients in AFREZZA.
- **Are having an episode of low blood sugar (hypoglycemia).**

What should I tell my healthcare provider before using AFREZZA?

Before using AFREZZA, tell your healthcare provider about all your medical conditions, including if you:

- Have lung problems such as asthma or COPD
- Have or have had lung cancer
- Are using any inhaled medications
- Smoke or have recently stopped smoking
- Have kidney or liver problems
- Are pregnant, planning to become pregnant, or are breastfeeding. AFREZZA may harm your unborn or breastfeeding baby.

Tell your healthcare provider about all the medicines you take, including prescription and over-the-counter medicines, vitamins or herbal supplements.

Before you start using AFREZZA, talk to your healthcare provider about low blood sugar and how to manage it.

What should I avoid while using AFREZZA?

While using AFREZZA do not:

- Drive or operate heavy machinery, until you know how AFREZZA affects you
- Drink alcohol or use over-the-counter medicines that contain alcohol
- Smoke

What are the possible side effects of AFREZZA?

AFREZZA may cause serious side effects that can lead to death, including: See "What is the most important information I should know about AFREZZA?"

Low blood sugar (hypoglycemia). Signs and symptoms that may indicate low blood sugar include:

- Dizziness or light-headedness, sweating, confusion, headache, blurred vision, slurred speech, shakiness, fast heartbeat, anxiety, irritability or mood change, hunger.

Decreased lung function. Your healthcare provider should check how your lungs are working before you start using AFREZZA, 6 months after you start using it, and yearly after that.

Lung cancer. In studies of AFREZZA in people with diabetes, lung cancer occurred in a few more people who were taking AFREZZA than in people who were taking other diabetes medications. There were too few cases to know if lung cancer was related to AFREZZA. If you have lung cancer, you and your healthcare provider should decide if you should use AFREZZA.

Diabetic ketoacidosis. Talk to your healthcare provider if you have an illness. Your AFREZZA dose or how often you check your blood sugar may need to be changed.

Severe allergic reaction (whole body reaction). Get medical help right away if you have any of these signs or symptoms of a severe allergic reaction:

- A rash over your whole body, trouble breathing, a fast heartbeat, or sweating.

Low potassium in your blood (hypokalemia).

Heart failure. Taking certain diabetes pills called thiazolidinediones or "TZDs" with AFREZZA may cause heart failure in some people. This can happen even if you have never had heart failure or heart problems before. If you already have heart failure it may get worse while you take TZDs with AFREZZA. Your healthcare provider should monitor you closely while you are taking TZDs with AFREZZA. Tell your healthcare provider if you have any new or worse symptoms of heart failure including:

- Shortness of breath, swelling of your ankles or feet, sudden weight gain.

Treatment with TZDs and AFREZZA may need to be changed or stopped by your healthcare provider if you have new or worse heart failure.

Get emergency medical help if you have:

- Trouble breathing, shortness of breath, fast heartbeat, swelling of your face, tongue, or throat, sweating, extreme drowsiness, dizziness, confusion.

The most common side effects of AFREZZA include:

- Low blood sugar (hypoglycemia), cough, sore throat.

These are not all the possible side effects of AFREZZA. Call your doctor for medical advice about side effects.

You are encouraged to report negative side effects of prescription drugs to the FDA. Visit www.fda.gov/medwatch, or call 1-800-FDA-1088 (1-800-332-1088).

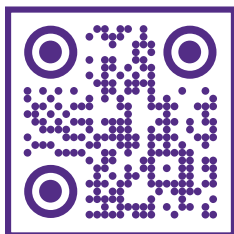
Please See Full Prescribing Information, including BOXED WARNING, Medication Guide and Instructions for Use at Afrezza.com/safety.



Life doesn't always follow a schedule. Ask your doctor about AFREZZA for mealtime insulin.



Visit afrezza.com to learn more about the only ultra rapid-acting inhaled mealtime insulin.



SCAN QR CODE TO
LEARN MORE

Please see accompanying Medication Guide and Instructions For Use in the pocket of this brochure, and see Important Safety Information including **BOXED WARNING** on pages 10-11 of this brochure.

mannkind

AFREZZA, AFREZZAASSIST, MANNKIND, and the AFREZZAASSIST, MannKind, and the Afrezza logos are registered trademarks of MannKind Corporation.
© MannKind Corporation March 2025. US-AFR-2617